



M100 Brushless a condensatore

Brushless with Capacitor
Sin escobillas con condensador

MR100 A spazzole con AVR

Brush with AVR
Con escobillas y AVR

IT | Caratteristiche tecniche

M100
Tensione standard 50Hz: 230V, 240V 60Hz: 110/220V, 120/240V Altri valori a richiesta
Classe d'isolamento H
Protezione IP 23
T.H.D. ≤ 6%
Precisione tensione ± 5%, - 10% (cosφ = 1)
Capacità di spunto (Icc > 3In)
Optional Quadro elettrico, Carica batterie

MR100
Tensione standard 50Hz: range 110÷120/220÷240V 60Hz: range 110÷120/220÷240V Altri valori a richiesta
Classe d'isolamento H
Protezione IP 23
T.H.D. ≤ 6%
Precisione tensione ± 2% (indipendentemente dal cosφ)
Capacità di spunto (Icc > 4In)
Optional Quadro elettrico, Carica batterie
Regolatore automatico di tensione AVR 860 • Provvisto di protezioni per Sottovelocità, Massima tensione, Massima corrente di eccitazione, Sovraccarico prolungato (max kVA) • Possibilità di regolare la tensione a distanza

EN | Technical characteristics

M100
Standard voltage 50Hz: 230V, 240V 60Hz: 110/220V, 120/240V Other voltages on request
Insulation class H
Protection IP 23
T.H.D. ≤ 6%
Voltage accuracy ± 5%, - 10% (cosφ = 1)
Starting capacity (Icc > 3In)
Optional Electrical panel, Battery charger

MR100
Standard voltage 50Hz: range 110÷120/220÷240V 60Hz: range 110÷120/220÷240V Other voltages on request
Insulation class H
Protection IP 23
T.H.D. ≤ 6%
Voltage accuracy ± 2% (regardless of cosφ)
Starting capacity (Icc > 4In)
Optional Electrical panel, Battery charger
Automatic Voltage Regulator AVR 860 • Supplied with protections for Underspeed, Maximum voltage, Maximum excitation current, Prolonged overload (max kVA) • Remotely adjustable voltage regulator

ES | Características técnicas

M100
Voltaje estándar 50Hz: 230V, 240V 60Hz: 110/220V, 120/240V Otros valores a pedido
Clase de aislamiento H
Protección IP 23
T.H.D. ≤ 6%
Precisión del voltaje ± 5%, - 10% (cosφ = 1)
Capacidad de arranque (Icc > 3In)
Opcional Cuadro eléctrico, Carga baterías

MR100
Voltaje estándar 50Hz: gama 110÷120/220÷240V 60Hz: gama 110÷120/220÷240V Otros valores a pedido
Clase de aislamiento H
Protección IP 23
T.H.D. ≤ 6%
Precisión del voltaje ± 2% (independientemente de cosφ)
Capacidad de arranque (Icc > 4In)
Opcional Cuadro eléctrico, Carga baterías
Regulador automático de voltaje AVR 860 • Equipado con protecciones para Sub-velocidad, Máxima tensión eléctrica, Máxima corriente de excitación, Sobrecarga prolongada (max kVA) • Posibilidad de regulación de la tensión a distancia

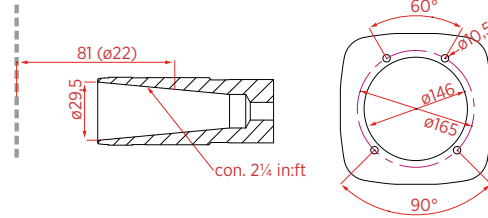
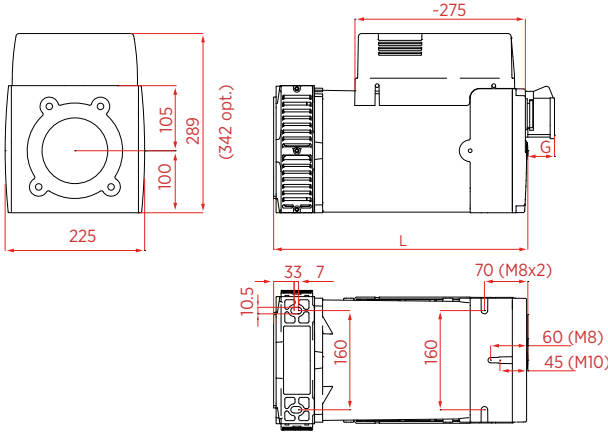
Modello Model Modelo	Potenza Output Power Potencia		Potenza assorbita Driving Power Potencia absorbida		Potenza Output Power Potencia		Potenza assorbita Driving Power Potencia absorbida		Peso Weight Peso		
	cosφ 1 [kVA]	cosφ 0,8 [kVA]	4/4 - cosφ 1 [kW] η %		cosφ 1 [kVA]	cosφ 0,8 [kVA]	4/4 - cosφ 1 [kW] η%		cone [kg]	B34 [kg]	SAE [kg]
50Hz - 3000rpm					60Hz - 3600rpm						
M100 SEJ	4,2	---	5,8	73,0	5,5	---	7,4	74,0	20,5	22,0	24,0
M100 SFK	5,0	---	6,7	75,0	6,0	---	7,9	76,0	22,0	23,5	25,5
M100 SFX	5,5	---	7,3	75,5	6,5	---	8,5	76,5	24,0	25,5	27,5
M100 SG	6,0	---	7,9	76,0	7,5	---	9,7	77,0	27,0	28,5	30,5
M100 LH	7,0	---	9,0	78,0	8,5	---	10,8	79,0	30,0	31,5	33,5
M100 LL	8,0	---	10,0	80,0	10,0	---	12,3	81,0	35,0	36,5	38,5
MR100 SF	5,5	4,5	7,3	75,0	6,5	5,0	8,6	76,0	25,0	26,5	28,5
MR100 LG	6,0	5,0	7,9	76,0	7,5	6,0	9,7	77,0	29,0	30,5	32,5
MR100 LH	7,0	5,5	9,0	78,0	8,5	7,0	10,8	79,0	31,0	32,5	34,5
MR100 LL	8,0	6,5	10,0	80,0	10,0	8,0	12,3	81,0	36,0	37,5	39,5

CONE

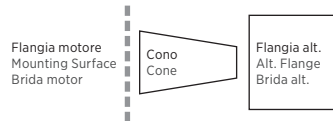
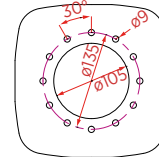
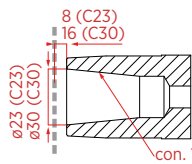
Overall Dimensions
Dimensiones

J609b

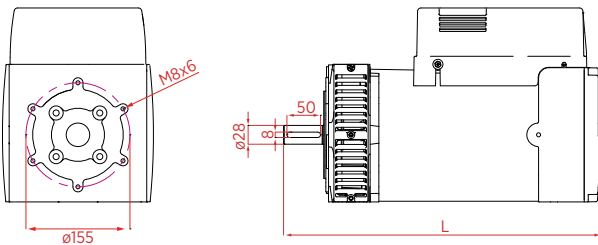
C 22
C 25,4
C 35



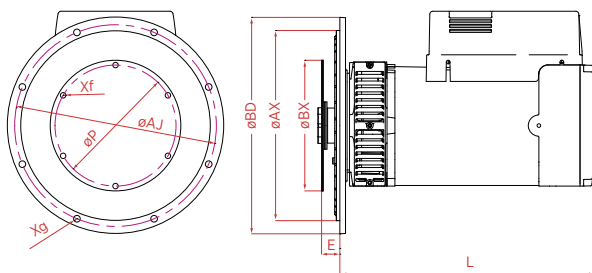
C 23
C 30



B34



SAE



SAE	Flangia Flange Brida			
	ØBD	ØAX	ØAJ	Xf
	[mm]			
5	358	314,33	333,4	Ø11 (8)
4	405	361,95	381,0	Ø11 (12)

SAE	Giunto Joint Junta			
	ØBX	ØP	E	Xg
	[mm]			
6,5	215,9	200,02	30,2	Ø9 (6)
7,5	241,3	222,25	30,2	Ø9 (8)

cone	B34	SAE
	L	
	[mm]	
M-MR100 S-	345	408
M-MR100 L-	410	473

Prese Sockets Tomas	G
	[mm]
Schuko	13
CEE 16A	55
CEE 32A	67
NEMA	1

Dati tecnici non impegnativi: NSM si riserva il diritto di apportare modifiche senza l'obbligo di darne preventiva comunicazione.

Technical data not binding: NSM reserves the right to modify the contents without prior notice.

Datos técnicos sin compromiso: NSM se reserva el derecho de hacer cambios sin previo aviso.