



### T100

#### A spazzole e compound

Brush with Compound  
Con escobillas y compound

### TR100

#### A spazzole con AVR

Brush with AVR  
Con escobillas y AVR

#### IT | Caratteristiche tecniche

##### T100

###### Tensione standard

50Hz: 230/400V, 240/415V  
60Hz: 127/220V, 220/380V  
Altri valori a richiesta

###### Classe d'isolamento H

###### Protezione IP 23

T.H.D. ≤ 6%

Precisione tensione ± 6% (cosφ = 0,9)

Capacità di spunto (Icc ≥ 4In)

Optional Quadro elettrico, Carica batterie

##### TR100

###### Tensione standard

50Hz: range 230÷240/400÷415V  
60Hz: 127/220V, 220/380V  
Altri valori a richiesta

###### Classe d'isolamento H

###### Protezione IP 23

T.H.D. ≤ 6%

Precisione tensione ± 1,5% (indipendentemente dal cosφ)

Capacità di spunto (Icc ≥ 3In)

Optional Quadro elettrico, Carica batterie

###### Regolatore automatico di tensione AVR 860

- Provvisto di protezioni per Sottovelocità, Massima tensione, Massima corrente di eccitazione, Sovraccarico prolungato (max kVA)
- Possibilità di regolare la tensione a distanza

#### EN | Technical characteristics

##### T100

###### Standard voltage

50Hz: 230/400V, 240/415V  
60Hz: 127/220V, 220/380V  
Other voltages on request

###### Insulation class H

###### Protection IP 23

T.H.D. ≤ 6%

Voltage accuracy ± 6% (cosφ = 0,9)

Starting capacity (Icc ≥ 4In)

Optional Electrical panel, Battery charger

##### TR100

###### Standard voltage

50Hz: range 230÷240/400÷415V  
60Hz: 127/220V, 220/380V  
Other voltages on request

###### Insulation class H

###### Protection IP 23

T.H.D. ≤ 6%

Voltage accuracy ± 1,5% (regardless of cosφ)

Starting capacity (Icc ≥ 3In)

Optional Electrical panel, Battery charger

###### Automatic Voltage Regulator AVR 860

- Supplied with protections for Underspeed, Maximum voltage, Maximum excitation current, Prolonged overload (max kVA)
- Remotely adjustable voltage regulator

#### ES | Características técnicas

##### T100

###### Voltaje estándar

50Hz: 230/400V, 240/415V  
60Hz: 127/220V, 220/380V  
Otros valores a pedido

###### Clase de aislamiento H

###### Protección IP 23

T.H.D. ≤ 6%

Precisión del voltaje ± 6% (cosφ = 0,9)

Capacidad de arranque (Icc ≥ 4In)

Optional Cuadro eléctrico, Carga baterías

##### TR100

###### Voltaje estándar

50Hz: gama 230÷240/400÷415V  
60Hz: 127/220V, 220/380V  
Otros valores a pedido

###### Clase de aislamiento H

###### Protección IP 23

T.H.D. ≤ 6%

Precisión del voltaje ± 1,5% (independientemente de cosφ)

Capacidad de arranque (Icc ≥ 3In)

Optional Cuadro eléctrico, Carga baterías

###### Regulador automático de voltaje AVR 860

- Equipado con protecciones para Sub-velocidad, Máxima tensión eléctrica, Máxima corriente de excitación, Sobrecarga prolongada (max kVA)
- Posibilidad de regulación de la tensión a distancia

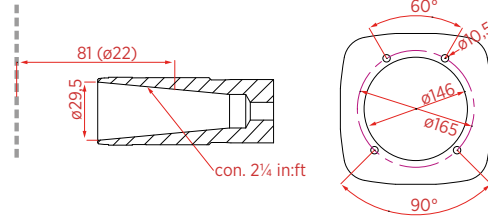
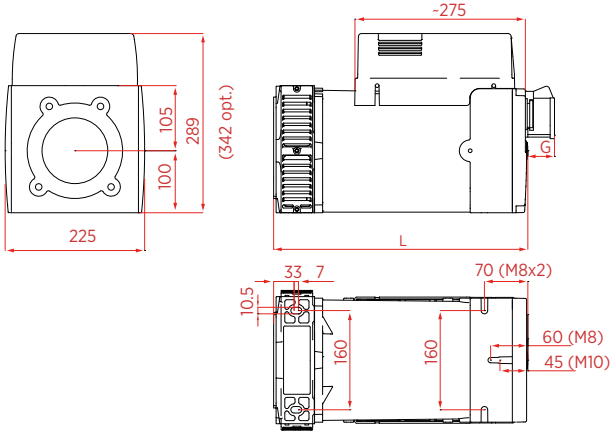
Modello Model Modelo	Potenza Output Power Potencia		Potenza assorbita Driving Power Potencia absorbida		Potenza Output Power Potencia		Potenza assorbita Driving Power Potencia absorbida		Peso Weight Peso			
	3 ph cosφ 0,8 [kVA]	1 ph cosφ 1 [kVA]	4/4 - cosφ 0,8 [kW]    η %		3 ph cosφ 0,8 [kVA]	1 ph cosφ 1 [kVA]	4/4 - cosφ 0,8 [kW]    η %		[kg]	B34 [kg]	SAE [kg]	
50Hz - 3000rpm					60Hz - 3600rpm							
T100 SB	6,0	2,7	6,1	79,0	7,5	3,7	7,5	80,0	28,5	30,0	32,0	
T100 SC	7,0	3,5	7,0	80,0	9,0	4,5	8,9	81,0	30,0	31,5	33,5	
T100 SCM	7,0	4,0	7,0	80,5	---	---	---	---	30,5	32,0	34,0	
T100 LA	8,5	4,5	8,3	82,0	11,0	5,5	10,6	83,0	36,0	37,5	39,5	
T100 LB	10,0	5,0	9,5	84,0	13,0	6,5	12,2	85,0	40,0	41,5	43,5	
TR100 SA	5,5	2,7	5,7	77,0	7,0	3,5	7,2	78,0	25,0	26,5	28,5	
TR100 SC	7,0	3,5	6,9	81,0	9,0	4,5	8,8	82,0	27,0	28,5	30,5	
TR100 LA	8,5	4,5	8,2	83,0	11,0	5,5	10,5	84,0	33,0	34,5	36,5	
TR100 LB	10,0	5,0	9,4	85,0	13,0	6,5	12,1	86,0	37,0	38,5	40,5	

CONE

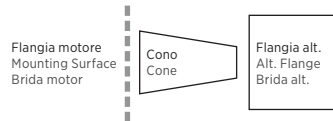
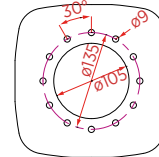
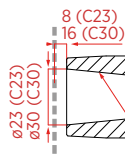
Overall Dimensions  
Dimensiones

J609b

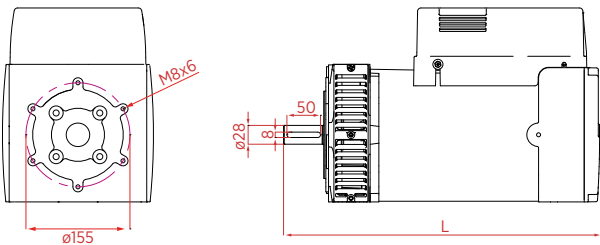
C 22  
C 25,4  
C 35



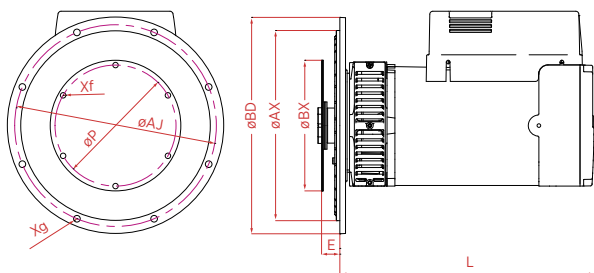
C 23  
C 30



B34



SAE



SAE	Flangia   Flange   Brida			
	ØBD	ØAX	ØAJ	Xf
	(mm)			
5	358	314,33	333,4	Ø11 (8)
4	405	361,95	381,0	Ø11 (12)

SAE	Giunto   Joint   Junta			
	ØBX	ØP	E	Xg
	(mm)			
6,5	215,9	200,02	30,2	Ø9 (6)
7,5	241,3	222,25	30,2	Ø9 (8)

	cone	B34	SAE
	L		
	(mm)		
T-TR100 S-	345	408	357
T-TR100 L-	410	473	422

Prese   Sockets   Tomas	G
	(mm)
Schuko	13
CEE 16A	55
CEE 32A	67
NEMA	1

Dati tecnici non impegnativi: NSM si riserva il diritto di apportare modifiche senza l'obbligo di darne preventiva comunicazione.

Technical data not binding: NSM reserves the right to modify the contents without prior notice.

Datos técnicos sin compromiso: NSM se reserva el derecho de hacer cambios sin previo aviso.